

**PRODUCT CHANGE NOTIFICATION COVERSHEET**

**CTS Part Number:** Model 632, 636, CB1V8, CB2V5

**Product Description:** HCMOS Clock Oscillator

**Customer:** Various

**Customer Part Number:** NA



**Change Notification Only - No Customer Response Required**



**Customer Authorization Required - Please Confirm Acceptance by E-Mail**

**Reason for PCN:** Change notification for revised product marking format.

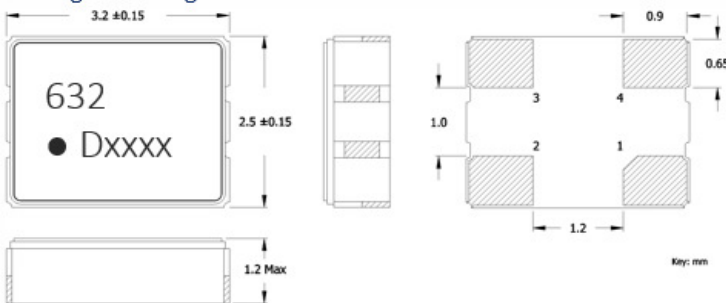
**Description for Change:** Product marking will change as follows.

**Model 632 [drawing 008-0328-0]**

Change To - New Format, Revision F]

**Mechanical Specifications**

Package Drawing



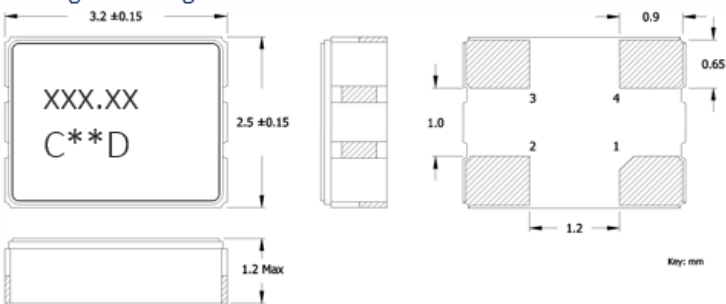
Marking Information

1. 632 – CTS Model.
2. D – Date Code. See Table I for codes.
3. xxxx – Frequency Code.  
3-digits, frequencies below 100MHz  
4-digits, frequencies 100MHz or greater  
[See document 016-1454-0, Frequency Code Tables.]

Change From - Old Format, Revision E]

**Mechanical Specifications**

Package Drawing



Marking Information

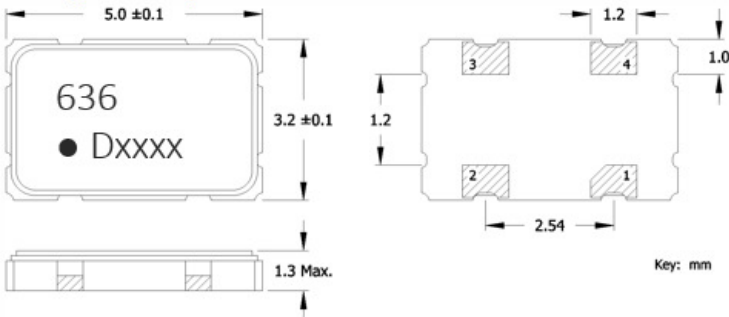
1. xxx.xx – Frequency in MHz.  
Frequency is marked with 1 - 3 leading significant digits before and 2 significant digits [including zeroes] after the decimal.  
Marking Examples:  
3.57954MHz = 3.57  
14.31818 MHz = 14.31  
125MHz = 125.00
2. C – CTS and Pin 1 identifier.
3. \*\* – Manufacturing Site Code.
4. D – Date Code. See Table I for codes.

**Model 636 [drawing 008-0250-0]**

Change To - New Format, Revision J]

**Mechanical Specifications**

Package Drawing



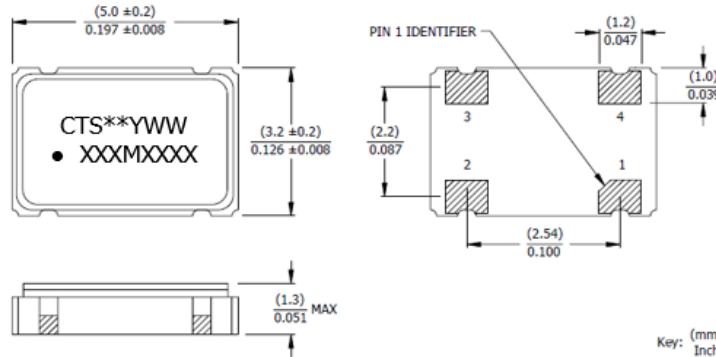
**Marking Information**

1. 636 – CTS Model.
  2. D – Date Code. See Table I for codes.
  3. xxxx – Frequency Code.  
3-digits, frequencies below 100MHz  
4-digits, frequencies 100MHz or greater
- [See document 016-1454-0, Frequency Code Tables.]

Change From - Old Format, Revision I]

**MECHANICAL SPECIFICATIONS**

PACKAGE DRAWING



**MARKING INFORMATION**

1. \*\* - Manufacturing Site Code.
2. YWW – Date code, Y – year, WW – week.
3. XXXMXXXX – Frequency is marked with only leading significant digits before the 'M' and 4 digits after the 'M' [including zeros].  
Ex. XXMXXXX [62M5000]  
XXMXXXX [155M5200]

**NOTES**

1. JEDEC termination code (e4). Barrier-plating is nickel [Ni] with gold [Au] flash plate.
2. Reflow conditions per JEDEC J-STD-020, +260°C maximum, 20 seconds.
3. MSL = 1.

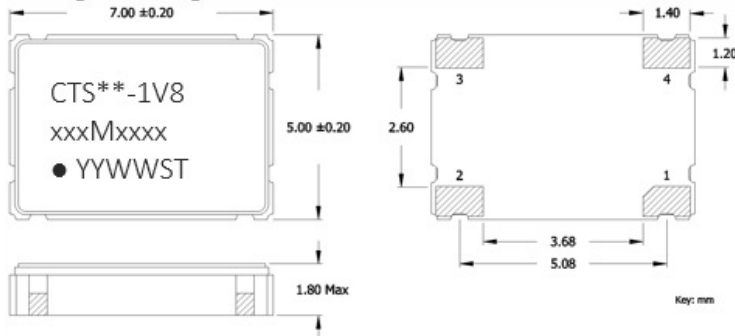
**D.U.T. PIN ASSIGNMENTS**

**Model CB1V8 [drawing 008-0277-0]**

Change To - New Format, Revision C]

**Mechanical Specifications**

Package Drawing



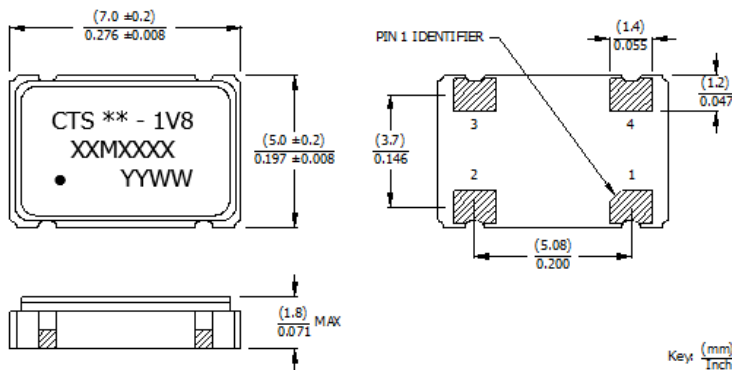
**Marking Information**

1. \*\* – Manufacturing Site Code.
2. xxxMxxxx – Frequency is marked with 1,2 or 3 leading significant digits before the “M” and 4 digits after the “M” [including zeroes].  
Ex. xMxxxx [3M5795]  
xxMxxxx [14M3181]  
xxMxxxx [25M0000]  
xxxMxxxx[125M0000]
3. YYWW – Date Code; YY = year, WW = week.
4. ST – Frequency Stability/Temperature Code.  
[Refer to ordering information for codes.]

Change From - Old Format, Revision B]

**MECHANICAL SPECIFICATIONS**

PACKAGE DRAWING



**MARKING INFORMATION**

1. \*\* - Manufacturing Site Code.
2. XXMXXXX - Frequency marked with 4 significant digits after the 'M'.
3. YYWW – Date code, YY – year, WW – week.

**NOTES**

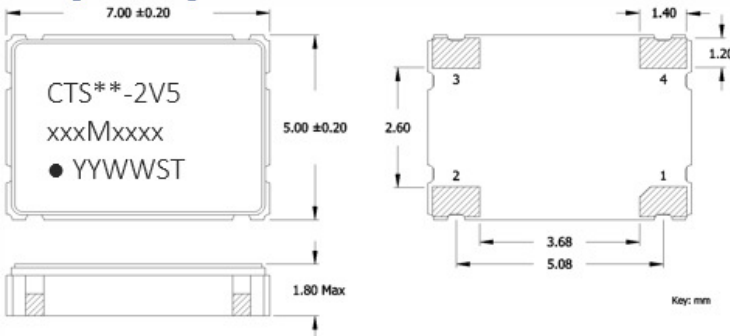
1. Termination pads (e4), barrier-plating is nickel (Ni) with gold (Au) flash plate.
2. Reflow conditions per JEDEC J-STD-020.

**Model CB2V5 [drawing 008-0281-0]**

Change To - New Format, Revision C]

**Mechanical Specifications**

Package Drawing



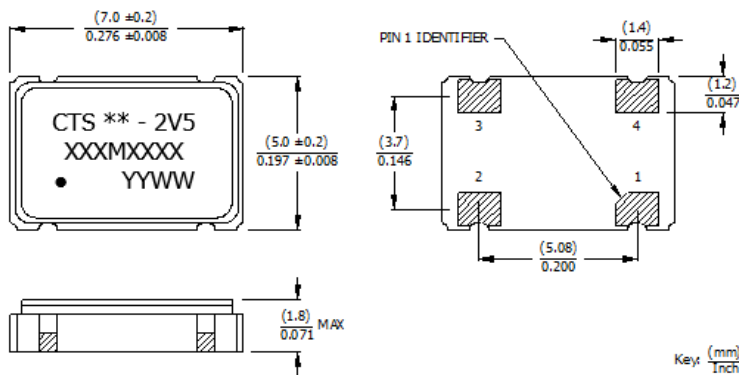
Marking Information

1. \*\* – Manufacturing Site Code.
2. xxxMxxxx – Frequency is marked with 1,2 or 3 leading significant digits before the “M” and 4 digits after the “M” [including zeroes].  
Ex. xMxxxx [3M5795]  
xxMxxxx [14M3181]  
xxMxxxx [25M0000]  
xxxMxxxx[125M0000]
3. YYWW – Date Code; YY = year, WW = week.
4. ST – Frequency Stability/Temperature Code. [Refer to ordering information for codes.]

Change From - Old Format, Revision B]

**MECHANICAL SPECIFICATIONS**

PACKAGE DRAWING



MARKING INFORMATION

1. \*\* - Manufacturing Site Code.
2. XXXMXXXX - Frequency marked with 4 significant digits after the “M”.
3. YYWW – Date code, YY – year, WW – week.

NOTES

1. Termination pads (e4), barrier-plating is nickel (Ni) with gold (Au) flash plate.
2. Reflow conditions per JEDEC J-STD-020.

**Change Instructions:** NA

**Implementation Date:** Factory will transition to new marking format per the following schedule. During these time periods there may be shipments that overlap with old and new revision marking formats, and will be fully implemented by 07/29/2022.

- Model 632: month of July 2022, date code U
- Model 636: month of July 2022, date code U
- Model CB1V8: last week of June, date code 2227
- Model CB2V5: last week of June, data code 2227

**Notes:** Marking change will not affect form-fit-function of device, inventory currently at customers or CTS Distributors, finished goods stock at factory or product in transit.

**CTS Contact:** John Metzler  
**E-Mail:** [john.metzler@ctscorp.com](mailto:john.metzler@ctscorp.com)  
**Phone:** 630-577-8828

**CTS Approvals:** CTS internal PCN electronic signatures.